

Compartmentalization and Regulation of Mitochondrial Function by Methionine Sulfoxide Reductases in Yeast[†]

Alaattin Kaya,[‡] Ahmet Koc,^{‡,||} Byung Cheon Lee,^{‡,§} Dmitri E. Fomenko,[‡] Mathieu Rederstorff,[⊥] Alain Krol,[⊥] Alain Lescure,[⊥] and Vadim N. Gladyshev^{*,§}

[‡]Department of Biochemistry and Redox Biology Center, University of Nebraska, Lincoln, Nebraska 68588, [§]Division of Genetics, Brigham and Women's Hospital and Harvard Medical School, 77 Avenue Louis Pasteur, Boston, Massachusetts 02115, ^{||}Department of Molecular Biology and Genetics, Izmir Institute of Technology, 35430 Urla, Izmir, Turkey, and [⊥]Institut de Biologie Moléculaire et Cellulaire, CNRS-Université de Strasbourg, 67084 Strasbourg, France

Received June 6, 2010; Revised Manuscript Received August 13, 2010

ABSTRACT: Elevated levels of reactive oxygen species can damage proteins. Sulfur-containing amino acid residues, cysteine and methionine, are particularly susceptible to such damage. Various enzymes evolved to protect proteins or repair oxidized residues, including methionine sulfoxide reductases MsrA and MsrB, which reduce methionine (*S*)-sulfoxide (Met-SO) and methionine (*R*)-sulfoxide (Met-RO) residues, respectively, back to methionine. Here, we show that MsrA and MsrB are involved in the regulation of mitochondrial function. *Saccharomyces cerevisiae* mutant cells lacking MsrA, MsrB, or both proteins had normal levels of mitochondria but lower levels of cytochrome *c* and fewer respiration-competent mitochondria. The growth of single MsrA or MsrB mutants on respiratory carbon sources was inhibited, and that of the double mutant was severely compromised, indicating impairment of mitochondrial function. Although MsrA and MsrB are thought to have similar roles in oxidative protein repair each targeting a diastereomer of methionine sulfoxide, their deletion resulted in different phenotypes. GFP fusions of MsrA and MsrB showed different localization patterns and primarily localized to cytoplasm and mitochondria, respectively. This finding agreed with compartment-specific enrichment of MsrA and MsrB activities. These results show that oxidative stress contributes to mitochondrial dysfunction through oxidation of methionine residues in proteins located in different cellular compartments.

Elevated levels of reactive oxygen species (ROS)¹ can cause damage to cellular components, including nucleic acids, proteins, and lipids (1, 2). Aside from their deleterious effects, ROS are also involved in the regulation of numerous cellular processes, such as gene expression and cell growth. Therefore, cells need to tightly regulate the levels of these oxidants. Cysteine and methionine, the two sulfur-containing amino acid residues, are particularly susceptible to oxidation by ROS. However, several oxidized forms of cysteine (e.g., sulfenic acid, sulfinic acid, and disulfide) and methionine (e.g., methionine sulfoxide) can be enzymatically reduced to the original residues, restoring protein activities (3–5). In addition, cyclic oxidation and reduction of cysteines and methionines in proteins are thought to make up a mechanism that protects cells from the deleterious effects of oxidants (6, 7).

Methionine sulfoxide has an asymmetric sulfur center, which gives rise to two diastereomers. Methionine sulfoxide reductase A (MsrA) was the first enzyme identified in the methionine repair pathway (8), and it is stereospecific for methionine (*S*)-sulfoxide (Met-SO). A second enzyme, methionine sulfoxide reductase B (MsrB), which is a selenium-containing protein in mammals and

a cysteine-containing protein in most other organisms (9–11), was also identified, and it is specific for methionine (*R*)-sulfoxide (Met-RO). Because both enzymes participate in the methionine sulfoxide reduction pathway, they are often expressed in a coordinated fashion, and in many bacteria, the genes for these two proteins are located within the same operon.

In addition, MsrA and MsrB have very similar phylogenetic profiles: their patterns of occurrence in completed genomes are essentially identical (9–12). This observation is particularly interesting because these two enzymes evolved from unrelated ancestral proteins. On the other hand, MsrA and MsrB use alternate substrates and are not known to interact with each other. In this regard, it is surprising that these two enzymes are sometimes fused to form a single polypeptide. For example, the PilB protein of *Neisseria gonorrhoeae* has a secreted form that is associated with the outer membrane and contains both MsrA and MsrB activities (13). What could then be the evolutionary advantage of linking these two proteins and activities? The requirement of Msrs for pathogenicity of certain microorganisms (14) suggests that some periplasmic proteins contain methionine residues that are oxidized and then repaired by Msrs. The pathogenicity of the bacteria containing periplasmic Msr systems may simply reflect the ability of these organisms to protect their electron transport chain components from the host defense response.

Oxidative stress is known to participate in programmed cell death. One early consequence of oxidative stress is the release of cytochrome *c* from mitochondria to cytosol. In animal cells, this process initiates a program that leads to cell death. However, the

[†]This study was supported by National Institutes of Health Grant AG021518 (to V.N.G.).

*To whom correspondence should be addressed. Telephone: (617) 525-5122. Fax: (617) 525-5147. E-mail: vgladyshev@rics.bwh.harvard.edu.

Abbreviations: MsrA, methionine sulfoxide reductase A; MsrB, methionine sulfoxide reductase B; Met-SO, methionine (*S*)-sulfoxide; Met-RO, methionine (*R*)-sulfoxide; ROS, reactive oxygen species; YPLA, yeast rich medium with lactic acid.

mechanisms by which the stress is sensed and causes mitochondrial dysfunction are not well understood. The cytochrome *c* has a conserved methionine that coordinates the heme iron and regulates the redox potential of this protein. This methionine has been described as a target for oxidation by ROS (15, 16), and the resulting methionine sulfoxide form of cytochrome *c* was shown to be impaired in electron transfer (15). In a recent study, mouse MsrA was shown to be important in cytochrome *c* repair and protection against cataract (17).

In this study, we found that Msrs regulate mitochondrial functions in yeast. Cells lacking MsrA and MsrB genes were respiratory-deficient because of lower levels of mitochondrial cytochrome *c* and had a shorter life span. Mitochondrial function was particularly compromised in cells lacking both Msrs. However, these enzymes unequally affected mitochondrial function, with MsrA being primarily located in the cytosol and MsrB in mitochondria. This study illustrates how the cellular system for methionine sulfoxide reduction regulates mitochondrial function.

MATERIALS AND METHODS

Yeast Growth and Media. Isolation of yeast mutants lacking methionine sulfoxide reductases was previously described (9–18). These cells were grown in either YPD medium (1% yeast extract, 2% peptone, 2% dextrose, or other carbon sources) or supplemented YNB (yeast nitrogen base). To analyze growth rates, 2% glycerol, 2% ethanol, or 1% lactic acid was used as a carbon source. SDC liquid medium [0.18% yeast nitrogen base without amino acids, 0.5% ammonium sulfate, 0.14% NaH₂PO₄, 0.173% complete amino acid mix, and 2% glucose (pH adjusted to 6.0 with NaOH)] was used for chronological life span and index of respiratory competence (IRC) assays.

Localization of MsrA and MsrB. Open reading frames of *Saccharomyces cerevisiae* MsrA and MsrB, without stop codons and with *Bam*HI and *Hind*III cloning sites, were PCR amplified and cloned into the *Sma*I site of pBS. GFP was subcloned from pEGFP-N2 into the *Hind*III-*Xho*I site of MsrA and MsrB constructs preserving the reading frames. A *Bam*HI-*Xho*I fragment encoding the Msr-GFP fusion protein was moved from pBS to p426 yeast vector containing a galactose-inducible promoter. Cells were transformed and initially grown in the presence of 2% glucose and then switched to growth on galactose to induce expression of the MsrA-GFP or MsrB-GFP fusion proteins. After 3 h, cells were pictured with a confocal fluorescence microscope.

Growth Curves. Yeast mutant strains were grown in the presence of 2% glycerol, 2% ethanol, or 1% lactic acid, and the absorbance was measured at 600 nm at indicated time points.

Western Blot Analysis. Logarithmically growing cells (5 mL) were harvested and lysed in extraction buffer containing 1× protease inhibitor cocktail (Sigma). Ten micrograms of total protein from these cell extracts was fractionated via sodium dodecyl sulfate-polyacrylamide gel electrophoresis (SDS-PAGE) gels and electrotransferred onto PVDF membranes (Invitrogen). Membranes were incubated with anti-cytochrome *c*₁ (Cyc1), anti-Tom40, and anti-phosphoglycerate kinase (PGK) antibodies. The blots were developed using an ECL detection system (GE Healthcare).

Cytochrome *c* Isolation. Cells were grown to stationary phase in YPD medium, shifted to YPG (3% glycerol), and incubated with gentle shaking. Ten grams (wet weight) of wild-type (WT) cells and 10 g of double mutant cells were harvested, and Cyc1 protein was extracted in parallel from these cells as described previously (19).

Analysis of Mitochondria. Flow cytometry was used to monitor the levels of functional mitochondria in WT and indicated mutant strains (20). Cells were grown to stationary phase in YPD medium, then shifted to YPG, and kept for additional 12 h. Approximately 10⁷ cells were harvested and stained with Mito-Tracker Red (Molecular Probes, Eugene, OR) as described by the manufacturer and analyzed with a flow cytometer.

Yeast Aging and Index of Respiratory Competence (IRC) Assays. For replicative aging assays, cells were grown on fresh medium for 2 days. For each strain, 35 daughter cells (starter mothers) were collected and lined up with a micromanipulator on agar plates. New buds (daughters) from these virgin cells were removed and discarded as they formed. This process continued until cells ceased dividing. The life span was determined as the total number of daughter cells that each mother cell generated. Chronological life span assays were conducted as described previously (21). Briefly, frozen stocks of mutant yeast strains were spread onto YPD plates and incubated at 30 °C for 2 days. Several colonies were chosen and incubated in 5 mL of SDC medium overnight. These cultures were diluted with 50 mL of SDC medium and incubated at 30 °C with shaking at 250 rpm. After 3 days, cells were diluted to an *A*₆₀₀ of 0.1–0.2 and used for viability assays wherein cells were spread onto YPD plates every 2 days and incubated at 30 °C and colonies counted after 3 days.

IRC assays were conducted according to the method described in ref 21. Briefly, from the same cultures that were used for chronological aging assays, cells were diluted to an *A*₆₀₀ of 0.1–0.2 and used for the IRC assay once in 2 days. Diluted cells were spread onto YPG plates and incubated at 30 °C, and colonies were counted after 3 days. The IRC was calculated as the number of colonies that were observed from YPG plates divided by the number of colonies on YPD plates.

Overexpression of MsrA and MsrB in Wild-Type and Msr Mutant Cells. MsrA and MsrB genes were amplified from yeast genomic DNA and cloned into *Bam*HI and *Xho*I restriction sites of a p425 or p423 yeast expression vector under the GPD promoter. These constructs were transformed into the WT, Msr double mutant (*MsrAΔ/MsrBΔ*), and Msr triple mutant (*MsrAΔ/MsrBΔ/fRMsrΔ*) cells using the lithium acetate method. For coexpression, plasmids for MsrA and MsrB were used in transformations. Also, 1 kb upstream of MsrA and MsrB along with ORF of each genes was cloned into *Sac*I and *Bam*HI restriction site of p425, which disrupts the GPD promoter for native expression of each gene under its own promoter.

Complementation Assay. Logarithmically growing wild-type, double mutant (*MsrAΔ/MsrBΔ*), and triple mutant (*MsrAΔ/MsrBΔ/fRMsrΔ*) cells, and the same cells expressing individual Msrs, were grown in YNB medium, harvested, and washed with distilled water. The cultures were diluted to an *A*₆₀₀ of 0.5. The double mutants were spotted on the appropriate YNB plates that contained glycerol for complementation of respiratory growth. Because the double Msr mutant strain had residual Msr activity, due to the presence of fRMsr [free methionine (*R*)-sulfoxide reductase] specific for the reduction of free Met-RO (22), the complementation assay for reductase activity was checked using the triple Msr mutant (*MsrAΔ/MsrBΔ/fRMsrΔ*). Appropriate YNB plates without methionine but with a racemic mixture of methionine sulfoxides (20 mg/L) for reductase activity were used for the spotting assay. Plates were then incubated at 30 °C for 4 days.

Assays of Superoxide Levels in Yeast Cells. In assays for mitochondrial superoxide, mitochondria-specific dye Mitosox (Invitrogen) was used as described previously (23). For cytoplasmic

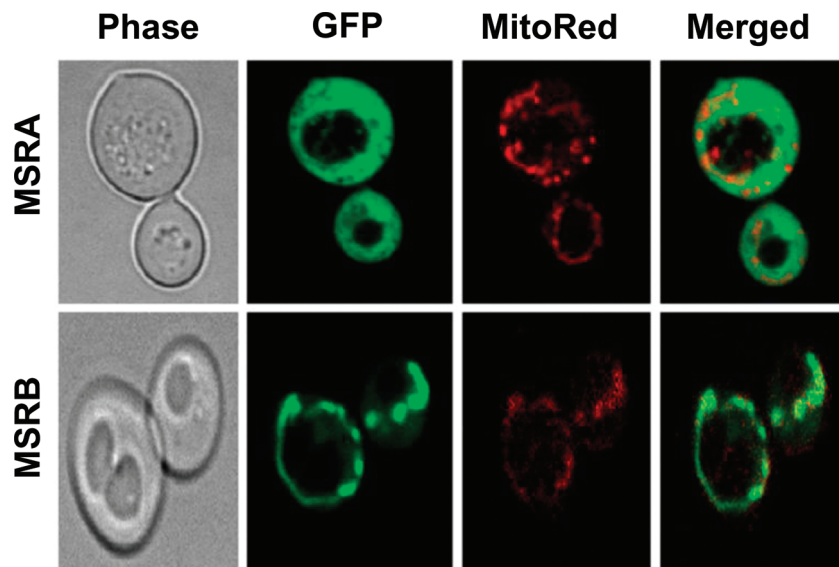


FIGURE 1: Localization of MsrA and MsrB in yeast cells. Confocal microscopy analysis of WT cells expressing C-terminal GFP fused to MsrA or MsrB. The MsrA signal (derived from the MsrA–GFP fusion protein) shows distribution throughout the cell, whereas the MsrB signal (from the MsrB–GFP fusion protein) shows a dotted pattern that overlaps with staining with MitoRed, a mitochondrial fluorescent dye.

superoxide levels, dihydroethidium dye (Sigma), which detects superoxide radicals in cytosol regardless of their origin, was used (23). Briefly, cells were grown overnight in YPD, diluted to an A_{600} of 0.6, centrifuged, and washed with water. Pellets were incubated in 5 mL of 2 mM H_2O_2 for 1 h, washed out of peroxide, and incubated in YPD medium. Dihydroethidium (DHet) was added to cultures to a concentration of 160 μ M for detection of cytosolic superoxide, and Mitosox was added to a concentration of 5 μ M to detect mitochondrial superoxide levels. Cultures were incubated for 45 min, washed, and resuspended in 2 mL of $1\times$ PBS. Fluorescence was measured with a flow cytometer for 10000 cells for each strain.

Isolation of Mitochondria and Analysis of MsrA and MsrB Activities in Cellular Compartments. The procedures were as previously described (24). Wild-type, *MsrA* Δ , *MsrB* Δ , and *MsrA* Δ /*MsrB* Δ yeast strains were grown at 30 °C for 16 h and then collected by centrifugation; 70–80 g of cells was suspended with 50 mL of 100 mM Tris (pH 9.4) in the presence of 10 mM DTT and incubated at 30 °C for 15 min with gentle shaking. After the supernatant had been removed by centrifugation at 3500 rpm, cells were resuspended in 40 mL of 1.2 M sorbitol buffer containing 2.5 mg of zymolyase 20T per gram of cells. Following incubation at 30 °C for 30 min with gentle shaking, cells were centrifuged at 5000 rpm for 5 min and resuspended in 100 mL of breaking buffer [0.6 M sorbitol with 20 mM MES potassium (pH 6.0 for mitochondria or pH 7.4 for cytosolic fractions)] containing 0.5 mM PMSF. These cells were then homogenized and centrifuged at 3500 rpm for 5 min. After the supernatant had been removed, it was centrifuged again at 10000 rpm for 10 min. The supernatant was collected as a cytosolic part, and the pellet was resuspended in breaking buffer (pH 6.0) lacking PMSF. After centrifugation and resuspension of this pellet had been repeated to obtain pure mitochondria, this mitochondrial pellet was finally resuspended in breaking buffer (pH 7.4) by using a Teflon dounce and then stored at -80 °C. Western blot analyses were performed to examine the preparation of subcellular fractions using 10 μ g of cytosolic or mitochondrial protein lysates and anti-Tom40 and anti-PGK antibodies.

MsrA and MsrB activities were measured in isolated mitochondria and cytosol of each strain using an HPLC procedure. Briefly, 200 μ g of protein was used in each assay. The reaction (100 μ L) was conducted at 37 °C for 30 min in the presence of 20 mM DTT, and either 200 μ M dabsyl-methionine (*S*)-sulfoxide (MsrA assay) or 200 μ M dabsyl-methionine (*R*)-sulfoxide (MsrB assay) was added to the reaction mixture. After the reaction had been stopped by the addition of 200 μ L of acetonitrile, the mixture was centrifuged at 4 °C for 15 min at 13000 rpm and then supernatant (50 μ L) was injected onto a C_{18} column (ZORBAX Eclipse XDB-C18) to quantify dabsyl-methionine.

RESULTS

Localization of MsrA and MsrB in Yeast. To test the role of Msrs in mitochondrial function, we used a yeast model organism, *S. cerevisiae*, for which strains deficient in MsrA, MsrB, or both enzymes are available (9). *S. cerevisiae* has single MsrA and MsrB genes, and these proteins stereospecifically reduce Met-SO and Met-RO, respectively. Interestingly, the specific activity of the yeast MsrA is at least 10 times higher than that of MsrB, and this difference is also reflected in the severity of phenotypes associated with the deficiency of one enzyme or the other (9). To examine the relevance of MsrA and MsrB to mitochondrial function, the localization of these enzymes was determined by expressing fusion proteins with GFP. Figure 1 shows fluorescence microscopy images of WT cells transformed with MsrA and MsrB expression constructs. MsrA exhibited diffuse distribution in the cytosol, whereas MsrB was located within defined subcellular compartments that resembled mitochondrial staining. The mitochondrial location of MsrB was further confirmed by colocalization with Mitotracker Red. In addition, it was noted that the MsrB protein sequence displays a predicted mitochondrial signal, whereas MsrA lacked such a signal peptide. Thus, localization experiments found that MsrA was located primarily in the cytosol, whereas MsrB resided mainly in mitochondria.

MsrA and MsrB Activities in the Cytosol and Mitochondria. We further examined the occurrence of MsrA and MsrB by characterizing the ability of cytosolic and mitochondrial fractions

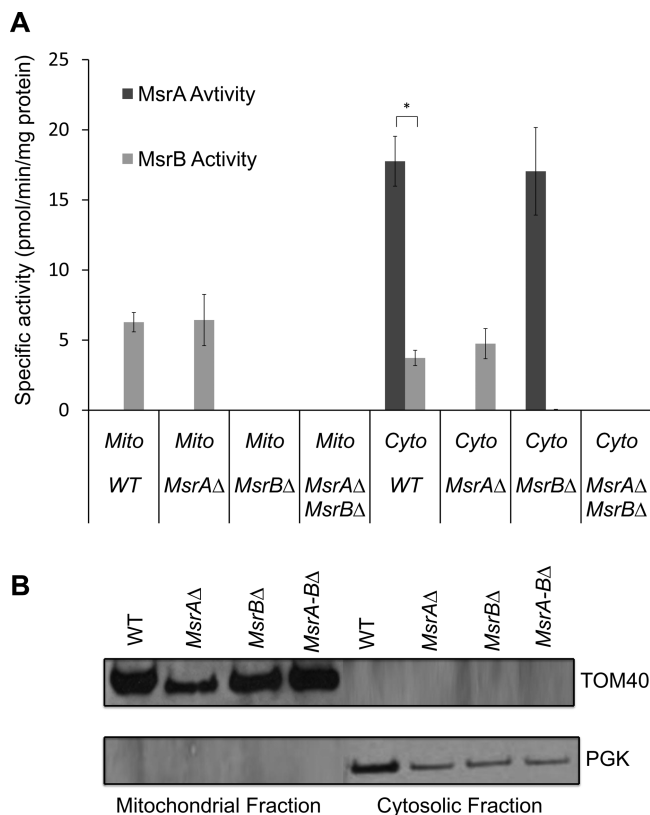


FIGURE 2: Met-SO and Met-RO activities in preparations of yeast cytosol and mitochondria. (A) Cytosol and mitochondria were isolated from wild-type and single and double *Msr* mutant strains and examined for the ability to reduce Met-SO and Met-RO in an *in vitro* assay. Error bars show the standard error of the mean of three independent analyses. (B) Purity of mitochondrial and cytosolic fractions analyzed by Western blot analysis using anti-PGK and anti-Tom40 antibodies.

to reduce dabsyl derivatives of Met-RO and Met-SO. In wild-type cells, mitochondria had higher MsrB activity than the cytosol, whereas the cytosolic fraction was highly enriched for MsrA activity (Figure 2A). Single mutants lacked the corresponding activities, and the double mutant exhibited no activity with either Met-SO or Met-RO (Figure 2A). Thus, MsrA is the main enzyme that reduces Met-SO residues in proteins, and it is primarily located in the cytosol ($p < 0.0089$); on the other hand, MsrB is the main protein that repairs Met-RO residues and is mostly located in mitochondria. The differential location of MsrA and MsrB activities was further verified via examination of the purity of cytosolic and mitochondrial fractions by Western blot analysis (Figure 2B).

Being antioxidant repair proteins, Msrs have roles in decreasing the intracellular level of ROS as initially postulated by Levine et al. (6). In addition, it was shown that MsrA knockout mice had higher levels of ROS in lens cells (17) and that MsrA-overexpressing PC12 cells had lower levels of ROS (25). To assess the role of yeast Msrs in regulating ROS, superoxide levels in single and double *Msr* mutants were assayed in cytosol and mitochondria using fluorescent dyes and compared with those in control cells (Figure 3). We found that deletion of either *Msr* gene or deletion of both genes led to a significant increase in ROS levels in both compartments. This result shows that both MsrA and MsrB play protective roles against ROS in mitochondria and cytosol in *S. cerevisiae*.

Methionine Sulfoxide Reductases Regulate Respiration. To test whether mitochondrial function is impaired in cells lacking

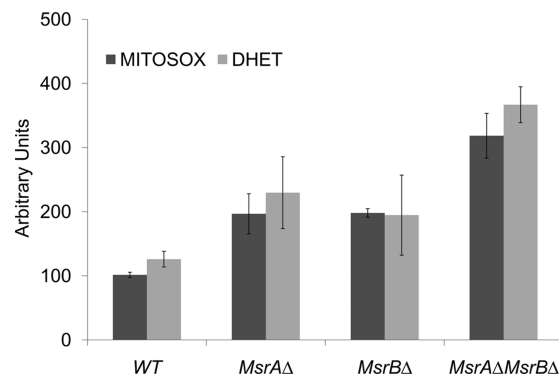


FIGURE 3: Superoxide levels in *Msr* mutants. Cytosolic and mitochondrial superoxide levels were assayed for WT and *Msr* mutant cells as described in Materials and Methods. Three independent analyses were performed for each strain.

MsrA and/or *MsrB*, the deletion mutant cells were grown in the presence of respiratory substrates: lactic acid (Figure 4A), ethanol (Figure 4B), and glycerol (Figure 4C). To derive energy from these compounds, yeast cells need to utilize TCA cycle enzymes and the electron transport system, which requires functional mitochondria. We found that the growth of *MsrA*Δ and *MsrB*Δ mutants was partially impaired and that of the *MsrA*Δ/*MsrB*Δ mutant was dramatically decreased in cells grown on these respiratory substrates. In lactate and ethanol media, the absence of MsrA retarded the growth more significantly than the absence of MsrB; thus, MsrA seems to be a more prominent regulator of mitochondrial function even if it is located mainly in the cytosol.

To improve our understanding of the finding of the slow growth of mutant cells on respiratory substrates, we determined Cyc1 levels in mutant and WT cells by Western blotting. As shown in Figure 5A, *MsrA*Δ and *MsrB*Δ single mutants had lower levels of cytochrome *c*, and the double mutant had extremely small amounts of Cyc1. In addition, we purified native cytochrome *c*, in parallel, from the same mass of WT and double mutant cells and analyzed proteins on an SDS-PAGE gel (Figure 5B). Little cytochrome *c* could be seen in the double mutant sample, whereas this protein was abundant in the sample derived from WT cells. To test whether the decreased level of Cyc1 in mutants was due to lower levels of mitochondria, lysates from mutant and WT cells were analyzed for a mitochondrion-specific marker protein, Tom40 (Figure 5A). Interestingly, *MsrA*Δ and *MsrB*Δ single mutants and the double mutant showed the same levels of mitochondria as WT cells.

We next utilized a flow cytometry approach to monitor the levels of functional mitochondria in cells. The MitoRed marker selectively accumulates within mitochondria in a membrane potential-dependent manner, which separates respiration-competent cells from respiration-deficient cells. Figure 5C shows the relative ratios of MitoRed-stained cells in WT and mutant strains. As could be deduced from this experiment, respiration-competent mitochondria in the double mutant cells were at a level of 8% and in *MsrA*Δ and *MsrB*Δ single mutants at levels of 17 and 75% of WT cells, respectively. Thus, the effect of MsrA deletion was stronger than that of MsrB deletion. The double mutant cells had few respiring mitochondria, showing that Msr deficiency leads to nonfunctional mitochondria rather than to a decrease in the number of mitochondria.

Msr Activities and Aging. It has previously been shown that calorie restriction extends the replicative life span of yeast cells by

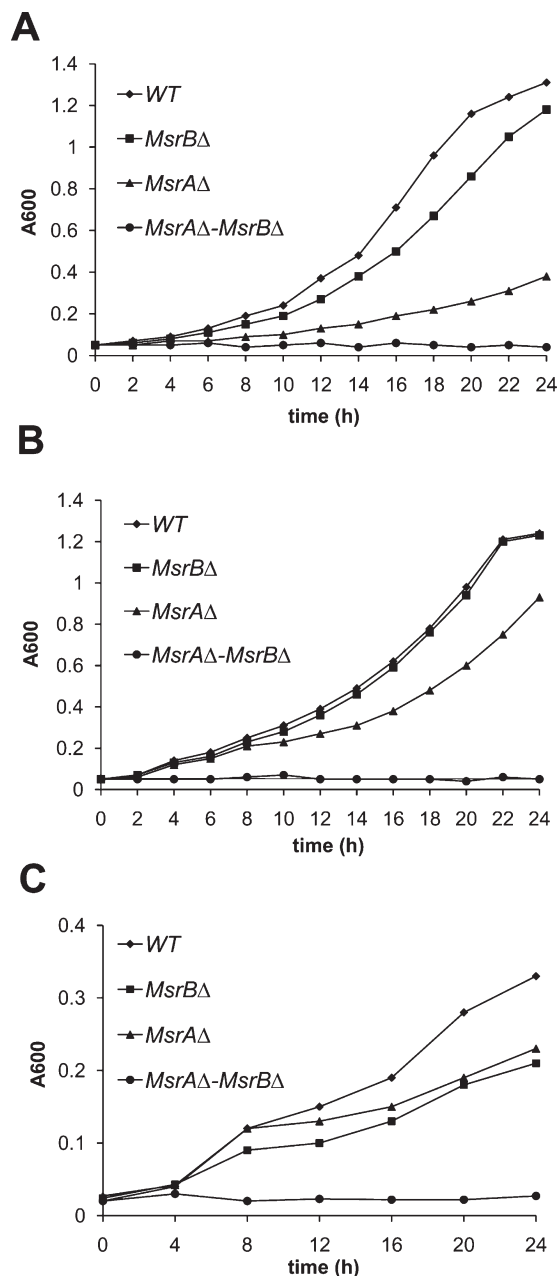


FIGURE 4: *MsrA* and *MsrB* regulate growth of yeast cells on respiratory substrates. Indicated WT and mutant cells were diluted to an A_{600} of 0.05 in glucose-free rich medium containing 1% lactic acid (A), 2% ethanol (B), or 2% glycerol (C) and incubated at 30 °C. Growth rates were monitored on the basis of A_{600} measurements. Error bars show the standard error of the mean. Three independent analyses were performed for each strain.

promoting a metabolic shift toward an increased level of mitochondrial respiration (26). If a higher rate of respiration leads to a longer life span, then respiratory substrates, such as lactic acid, would be expected to increase the life span as well. We conducted yeast aging assays and indeed found that all strains tested had 12–45% longer life spans on lactic acid compared to that of the corresponding cells maintained on 2% glucose. However, when analyzed within each growth condition, *MsrAΔ* single and *MsrAΔ/MsrBΔ* double mutants had reduced life spans compared to that of WT cells (Figure 6A). The lack of mitochondrial *MsrB* extended the life span by 25% in cells grown on lactate compared to those on glucose (Figure 6B). Because of the growth defect on respiratory substrates, we could not conduct

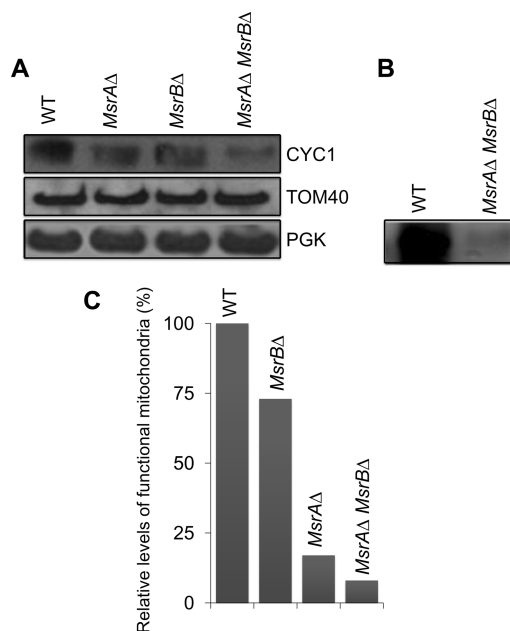


FIGURE 5: Levels of cytochrome *c* and functional mitochondria are lower in methionine sulfoxide reductase mutants. (A) Western blot analysis of cell extracts with polyclonal antibodies specific for cytochrome c_1 and Tom40. Ten micrograms of protein was loaded in each lane, and PGK was used as a loading control. (B) SDS-PAGE analysis of native cytochrome *c* preparations isolated from WT and double mutant cells. The same amount of cells (10 g of wet weight) was used for both strains; proteins were purified in parallel using identical procedures, and 10 μ L of each preparation was loaded on the gel. (C) WT and indicated mutant cells were stained with MitoRed and analyzed by flow cytometry, and relative ratios of signal densities of a representative assay were plotted.

aging assays for the *MsrAΔ/MsrBΔ* strain under lactic acid conditions. In addition, we assayed chronological aging for single and double mutant strains (Figure 6C). With the samples used for chronological aging assays, we further analyzed the index of respiratory competence (IRC), which reflects the fraction of cells that can grow on both fermentable (glucose) and nonfermentable (ethanol, glycerol, or lactate) carbon sources (21). The data suggested that the *MsrAΔ/MsrBΔ* strain could not use nonfermentable respiratory sources, whereas *MsrBΔ* used them better than *MsrAΔ* (Figure 7). Thus, *MsrA* plays an important role in the mitochondrial function, and *MsrB* contributes to this function.

Double Deletion of *Msr* Genes Causes Irreversible Damage to Mitochondrial Function. To test whether impaired mitochondrial function could be rescued by overexpression of Msrs, we performed a complementation assay. Both genes were expressed under the control of their own promoters by cloning a 1 kb upstream region of each gene along with the ORF. Figure 8A shows that overexpression of *MsrA* or *MsrB* did not normalize mitochondrial function of the double mutant grown on a respiratory substrate, because respiratory substrates require functional mitochondria. Furthermore, coexpression of each *Msr* gene in the same cells also did not result in cell growth (Figure 8B). This complementation assay was repeated using different types of respiratory substrates (glycerol and ethanol) and different vectors (with GPD and TEF promoters). The same constructs were utilized for cell growth assays in the presence of a racemic Met-RO and Met-SO mixture to test whether *Msr* activity can be complemented by overexpression of *Msr* genes. Because WT

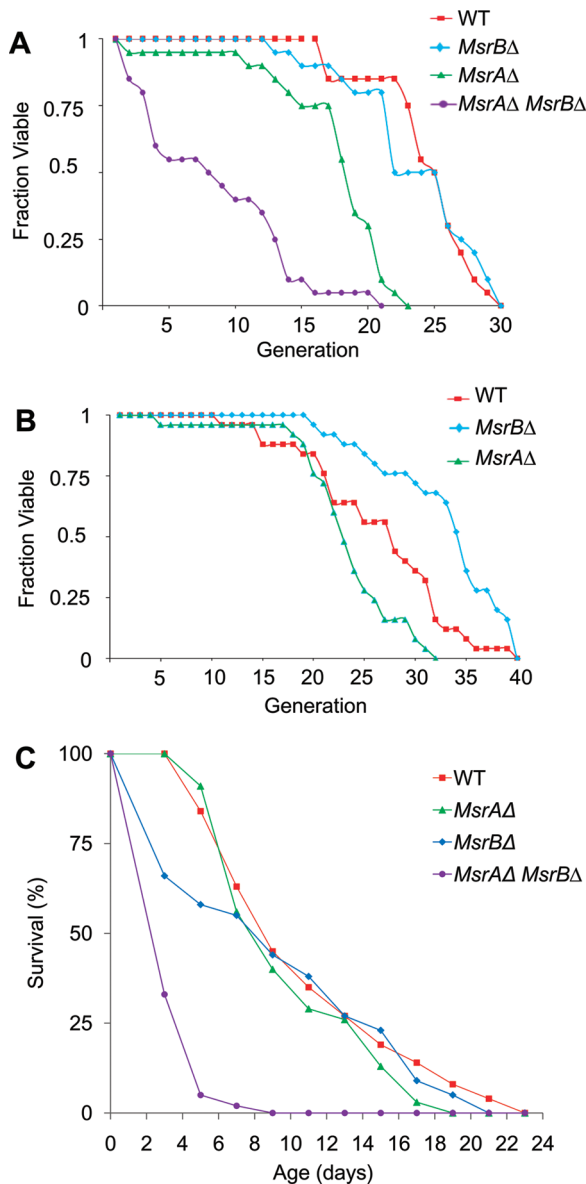


FIGURE 6: Life span analysis of WT and Msr mutant cells. Replicative (A and B) and chronological (C) life spans were determined for indicated WT and Msr mutant cells. For the replicative life span assay, cells were grown on glucose (A) or lactate (B).

and indicated mutant strains are methionine auxotrophs (9), cells could be supplemented with methionine sulfoxides to test the function of Msrs. As we discussed above (see Materials and Methods), we used the triple Msr mutant, with additional deletion of the free methionine-R-sulfoxide reductase (*MsrA*Δ/*MsrB*Δ/*fRMsr*Δ) to assay the reductase activity. Figure 8C shows that respiratory deficiency of mutants could not be rescued by overexpressing Msr genes. However, the reductase activity could be restored by overexpressing each of the Msr genes in the triple mutant (Figure 8D).

DISCUSSION

This study uncovered unexpectedly complex roles of MsrA and MsrB in regulating mitochondrial function in *S. cerevisiae*. Although these two oxidoreductases were expected to have complementary functions, each repairing one-half of methionine sulfoxide residues in proteins, we observed differences in the localization of these enzymes as well as differences in MsrA and

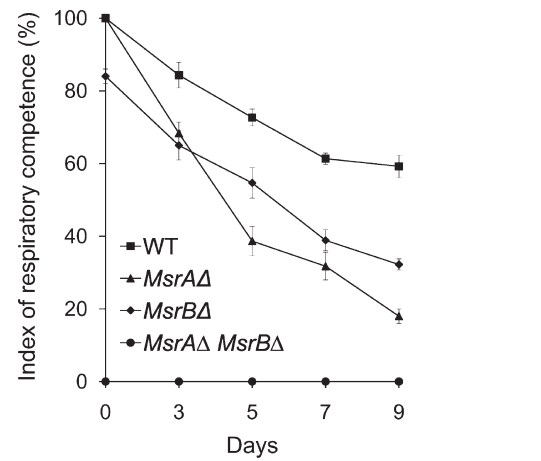


FIGURE 7: Analysis of the index of respiratory competence. An IRC assay shows how respiratory carbon sources support the growth of WT and Msr mutant cells. Error bars show the standard error of the mean. Three independent analyses were performed for each strain.

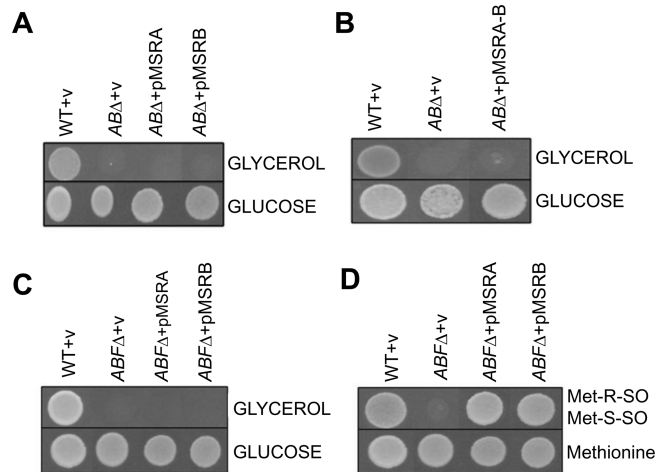


FIGURE 8: Complementation assay. The GPD promoter was disrupted in the p425 yeast expression vector, and MsrA and MsrB were expressed under their own promoters in Msr mutants. Designations of yeast strains are as follows: *AB*Δ, cells missing MsrA and MsrB genes; *ABF*Δ, cells missing MsrA, MsrB, and *fRMsr* genes. (A and B) Spotting assay using respiratory substrates. WT and double Msr mutant cells were analyzed as shown, together with mutant cells containing a vector (+v), expressing MsrA (+pMsrA) or MsrB (+pMsrB), or coexpressing MsrA and MsrB (+pMsrA-B). The triple Msr mutant was also analyzed (C) for growth on respiratory substrates and (D) following complementation of mitochondrial function of cells grown on Met-free YNB medium supplemented with 20 mg/L Met-RO or Met-SO.

MsrB activities in the cytosol and mitochondria. MsrA, in the fusion protein with GFP, localized primarily to the cytosol, whereas MsrB localized to mitochondria. Nevertheless, the absence of MsrA caused stronger phenotypes with regard to mitochondrial function.

In agreement with earlier observations in mice (27) and fruit flies (28), it was found that the replicative life span of yeast cells could be modulated by Msrs (29). Deletion and overexpression of Msrs could decrease and increase life span, respectively, under aerobic conditions. Interestingly, under anaerobic conditions, life span was significantly reduced compared to that in the presence of oxygen, suggesting a role for ROS-independent components of aging. However, under anaerobiosis, yeast life span was not influenced by Msrs, likely because ROS levels were low and thus

the enzymes that repair ROS damage were not needed (29). In contrast, a recent study showed that the shortened life span in MsrA knockout mice cannot be reproduced, even though the loss of MsrA made mice much more sensitive to oxidative stress (30).

The specific targets of Msrs are poorly understood. It is thought that MsrA and MsrB catalyze reduction of all accessible methionine sulfoxide residues, but this contrasts with the findings that reversible methionine sulfoxide reduction regulates activities of certain proteins, such as ion channels (31). In addition, one should expect that if MsrA and MsrB lack specificity for protein targets, susceptible methionine residues would have been counterselected from occurring in proteins that reside in regions most susceptible to oxidative damage. Following the findings that Msrs may be required to protect electron transport system components in bacteria (14) and cytochrome *c* in mouse (17), we found that mitochondrial function requires Msrs in yeast.

Mitochondria, being generators of ROS in eukaryotic cells, are also the targets of these reactive species. The steady state concentration of ROS in mitochondria might be higher than that in the rest of the cell (32). Mitochondrial DNA, because of its proximity to ROS generation sites and lack of protective histones, is exposed to ROS damage, and as a result, mtDNA accumulates mutations approximately 10 times faster than the nuclear DNA. In eukaryotes, studies established a clear link between mitochondrial function and aging (33). When mitochondria become nonfunctional, NADH is not processed by the electron transport chain and instead is oxidized by cytosolic NADH oxidase, which produces higher levels of free radicals that eventually may lead to cell death (34).

Our experimental analysis showed that yeast cells completely lacking Msrs had decreased growth rates on lactic acid and other respiratory substrates in liquid media and that they generally displayed shorter life spans. Further analysis of these mutant cells revealed that the levels of active respiring mitochondria were lower than those in WT cells and that cytochrome *c* levels were significantly lower in both single and double mutant strains even though they had normal levels of mitochondria. Indeed, overexpression of Msrs did not rescue mitochondrial function in double mutant cells, while the Msr function was restored under these conditions. An earlier cDNA microarray analysis showed that the expression level of cytochrome *c* and other respiratory genes did not change in the *MsrAΔ*, *MsrBΔ*, and *MsrAΔ/MsrBΔ* mutants (29), suggesting that the loss of cytochrome *c* was not due to transcriptional regulation in mutants. The absence of Msrs is expected to lead to ROS accumulation both in mitochondria and in cytosol, and the accumulation of ROS could lead to mitochondrial genome instability, accumulation of mutations, and eventually impaired mitochondrial function.

Yeast cells growing on 2% glucose preferentially utilize glycolysis and repress the synthesis of mitochondrial proteins. As a result, free radicals may be produced at intermediate levels (26–35). However, when cells are grown on 0.5% glucose, repression of respiratory genes is released, whereas life span is increased (26–36). A similar effect may be seen in cells that grow on respiratory substrates, such as lactate. When lactic acid is used as a carbon source, most of the respiratory genes were moderately upregulated in wild-type cells (data not shown). Deficiency in mitochondrial MsrB led to a dramatic activation of respiratory genes by lactic acid, and this upregulation of respiration may be the underlying reason why MsrB mutants had a longer life span in lactic acid. However, in the cells overexpressing MsrB, respiratory genes were not upregulated when these cells were

grown on lactic acid. Thus, the lack of MsrB led to a deficiency in the respiratory system and lactate-induced activation of the respiratory genes to meet the increased demand for energy production.

Because the MsrB–GFP fusion protein was primarily localized to mitochondria, we also searched for MsrB interacting partners using a yeast two-hybrid system and found that Uth1 interacts with MsrB (data not shown). The Uth1 protein, a member of the SUN family, was initially identified from a mutational screen for stress resistance and life span extension during starvation (37). Uth1 is a mitochondrial protein and is also known to reside in the outer mitochondrial membrane. It was shown to play a role in mitochondrial biogenesis and autophagy and yeast cell death induced by heterologous expression of the pro-apoptotic protein Bax (38, 39). Interestingly, Uth1 deficiency was shown to decrease the level of cytochrome proteins by up to 25%; however, the mechanisms by which Uth1 regulates mitochondrial function are not clear. The functional significance of the observed Uth1–MsrB interaction needs to be investigated further.

In eukaryotes, the release of cytochrome *c* from mitochondria upon exposure to oxidative stress has been known for a long time, but the molecular mechanism of how oxidative stress initiates cytochrome *c* release is not fully understood. Our data suggest that, in the absence of Msrs, oxidation of cytochrome *c* and possibly other respiratory enzymes causes mitochondrial dysfunction, which leads to mitochondrial collapse, premature aging, and cell death.

The functional differences between yeast MsrA and MsrB pose new questions. For example, it is not clear how the complementary methionine sulfoxide substrates are reduced in cytosol and mitochondria if each of these compartments has widely different levels of individual Msrs. One clue may come from the observation that, in yeast, MsrA is 10-fold more active than MsrB (29), which is consistent with the stronger phenotypes and changes in gene expression observed in MsrA deficiency compared to the deficiency of MsrB. Besides its involvement in oxidative protein repair, MsrA has a role in reducing free methionine sulfoxide in a process that supplies methionine to cells, whereas MsrB is only active with protein substrates. The need for targeting Msrs to different compartments is evident from the studies in mammals, which evolved separate Msrs for the cytosol (MsrB1), mitochondria (MsrB2), and endoplasmic reticulum (MsrB3) (40). Moreover, MsrB3 and MsrA are alternatively spliced, and MsrA can produce both mitochondrial and cytosolic forms from the same transcript (41).

ACKNOWLEDGMENT

We thank Drs. M. E. Dumont, F. Sherman, and B. Polevoda for providing Cycl antibodies and Drs. D. Pain and B. Musuvathi for Tom40 antibodies. We also thank Terri Fangman and Dr. You Zhou from the University of Nebraska Microscopy Core Facility and Danielle Shea from the Flow Cytometry Core Facility for expert assistance.

REFERENCES

1. Stadtman, E. R. (1992) Protein oxidation and aging. *Science* 257, 1220–1224.
2. Finkel, T., and Holbrook, N. J. (2000) Oxidants, oxidative stress and the biology of ageing. *Nature* 408, 239–247.
3. Brot, N., Weissbach, L., Werth, J., and Weissbach, H. (1981) Enzymatic reduction of oxidized α -1-proteinase inhibitor restores biological activity. *Proc. Natl. Acad. Sci. U.S.A.* 78, 2155–2158.

4. Friguet, B. (2006) Oxidized protein degradation and repair in ageing and oxidative stress. *FEBS Lett.* 580, 2910–2916.
5. Mary, J., Vouquier, S., Picot, C. R., Perichon, M., Petropoulos, I., and Friguet, B. (2004) Enzymatic reactions involved in the repair of oxidized proteins. *Exp. Gerontol.* 8, 1117–1123.
6. Levine, R. L., Mosoni, L., Berlett, B. S., and Stadtman, E. R. (1996) Methionine residues as endogenous antioxidants in proteins. *Proc. Natl. Acad. Sci. U.S.A.* 93, 15036–15040.
7. Stadtman, E. R., and Levine, R. L. (2000) Protein oxidation. *Ann. N. Y. Acad. Sci.* 899, 191–208.
8. Brot, N., Weissbach, L., Werth, J., and Weissbach, H. (1980) Enzymatic reduction of protein-bound methionine sulfoxide. *Proc. Natl. Acad. Sci. U.S.A.* 78, 2155–2158.
9. Kryukov, G. V., Kumar, R. A., Koc, A., Sun, Z., and Gladyshev, V. N. (2002) Selenoprotein R is a zinc-containing stereo-specific methionine sulfoxide reductase. *Proc. Natl. Acad. Sci. U.S.A.* 99, 4245–4250.
10. Huang, W., Escribano, J., Sarfazi, M., and Coca-Prados, M. (1999) Identification, expression and chromosome localization of a human gene encoding a novel protein with similarity to the pilB family of transcriptional factors (pilin) and to bacterial peptide methionine sulfoxide reductases. *Gene* 233, 233–240.
11. Grimaud, R., Ezraty, B., Mitchell, J. K., Lafitte, D., Briand, C., Derrick, P. J., and Barras, F. (2001) Repair of oxidized proteins. Identification of a new methionine sulfoxide reductase. *J. Biol. Chem.* 276, 48915–48920.
12. Ezraty, B., Aussel, L., and Barras, F. (2005) Methionine sulfoxide reductases in prokaryotes. *Biochim. Biophys. Acta* 1703, 221–229.
13. Skaar, E. P., Tobiason, D. M., Quick, J., Judd, R. C., Weissbach, H., Etienne, F., Brot, N., and Seifert, H. S. (2002) The outer membrane localization of the *Neisseria gonorrhoeae* MsrA/B is involved in survival against reactive oxygen species. *Proc. Natl. Acad. Sci. U.S.A.* 99, 10108–10113.
14. Hassouni, M. E., Chambost, J. P., Expert, D., Gijsegem, V. F., and Barras, F. (1999) The minimal gene set member msaA, encoding peptide methionine sulfoxide reductase, is a virulence determinant of the plant pathogen *Erwinia chrysanthemi*. *Proc. Natl. Acad. Sci. U.S.A.* 96, 887–892.
15. Feinberg, B. A., Bedore, J. E., Jr., and Ferguson-Miller, S. (1986) Methionine-80-sulfoxide cytochrome c: Preparation, purification and electron-transfer capabilities. *Biochim. Biophys. Acta* 851, 157–165.
16. Ivanetich, K. M., Bradshaw, J. J., and Kaminsky, L. S. (1976) Methionine sulfoxide cytochrome c. *Biochemistry* 15, 1144–1153.
17. Marchetti, M., Lee, W., Cowell, T., Wells, T., Weissbach, H., and Kantorow, M. (2006) Silencing of the methionine sulfoxide reductase A gene results in loss of mitochondrial membrane potential and increased ROS production in human lens cells. *J. Exp. Eye Res.* 83, 1281–1286.
18. Le, D. T., Lee, B. C., Marino, S. M., Zhang, Y., Fomenko, D. E., Kaya, A., Hacıoglu, E., Kwak, G. H., Koc, A., Kim, H. Y., and Gladyshev, V. N. (2009) Functional analysis of free methionine-R-sulfoxide reductase from *Saccharomyces cerevisiae*. *J. Biol. Chem.* 284, 4354–4364.
19. Komar-Panicucci, S., Sherman, F., and McLendon, G. (1996) Modulated growth of *Saccharomyces cerevisiae* by altering the driving force of the reactions of cytochrome c: Marcus' theory in vitro and in vivo. *Biochemistry* 35, 4878–4885.
20. Skowronek, P., Krummeck, G., Haferkamp, O., and Rodel, G. (1990) Flow cytometry as a tool to discriminate respiratory-competent and respiratory-deficient yeast cells. *Curr. Genet.* 18, 265–267.
21. Parrella, E., and Longo, V. D. (2008) The chronological life span of *Saccharomyces cerevisiae* to study mitochondrial dysfunction and disease. *Methods* 46, 256–262.
22. Lin, Z., Johnson, L. C., Weissbach, H., Brot, N., Lively, M. O., and Lowther, W. T. (2007) Free methionine-(R)-sulfoxide reductase from *Escherichia coli* reveals a new GAF domain function. *Proc. Natl. Acad. Sci. U.S.A.* 104, 9597–9602.
23. Griffiths, L., Swartzlander, D., Meadows, K. L., Wilkinson, K. D., Corbett, A. H., and Doetsch, P. W. (2008) Dynamic compartmentalization of base excision repair proteins in response to nuclear and mitochondrial oxidative stress. *Mol. Cell. Biol.* 29, 794–807.
24. Meisinger, C., Sommer, T., and Pfanner, N. (2000) Purification of *Saccharomyces cerevisiae* mitochondria devoid of microsomal and cytosolic contaminations. *Anal. Biochem.* 287, 339–342.
25. Yermolaieva, O., Xu, R., Schinstock, C., Brot, N., Weissbach, H., Heinemann, S. H., and Hosh, T. (2004) Methionine sulfoxide reductase A protects neuronal cells against brief hypoxia/reoxygenation. *Proc. Natl. Acad. Sci. U.S.A.* 101, 1159–1164.
26. Lin, S. J., Kaerberlein, M., Andalis, A. A., Sturtz, L. A., Defossez, P. A., Culotta, V. C., Fink, G. R., and Guarente, L. (2002) Calorie restriction extends *Saccharomyces cerevisiae* lifespan by increasing respiration. *Nature* 418, 344–348.
27. Moskovitz, J., Bar-Noy, S., Williams, W. M., Requena, J., Berlett, B. S., and Stadtman, E. R. (2001) Methionine sulfoxide reductase (MsrA) is a regulator of antioxidant defense and lifespan in mammals. *Proc. Natl. Acad. Sci. U.S.A.* 98, 12920–12925.
28. Ruan, H., Tang, X. D., Chen, M. L., Joiner, M. L., Sun, G., Brot, N., Weissbach, H., Heinemann, S. H., Iverson, L., Wu, C. F., and Hoshi, T. (2002) High-quality life extension by the enzyme peptide methionine sulfoxide reductase. *Proc. Natl. Acad. Sci. U.S.A.* 99, 2748–2753.
29. Koc, A., Gasch, A. P., Rutherford, J. C., Kim, H. Y., and Gladyshev, V. N. (2004) Methionine sulfoxide reductase regulation of yeast lifespan reveals reactive oxygen species-dependent and -independent components of aging. *Proc. Natl. Acad. Sci. U.S.A.* 101, 7999–8004.
30. Salmon, A. B., Perez, V. I., Bokov, A., Jernigan, A., Kim, G., Zhao, H., Levine, R. L., and Richardson, A. (2009) Lack of methionine sulfoxide reductase A in mice increases sensitivity to oxidative stress but does not diminish life span. *FASEB J.* 10, 3601–3608.
31. Tang, X. D., Daggett, H., Hanner, M., Garcia, M. L., McManus, O. B., Brot, N., Weissbach, H., Heinemann, S. H., and Hoshi, T. (2001) Oxidative regulation of large conductance calcium-activated potassium channels. *J. Gen. Physiol.* 117, 253–274.
32. Richter, C., Park, J. W., and Ames, B. N. (1988) Normal oxidative damage to mitochondrial and nuclear DNA is extensive. *Proc. Natl. Acad. Sci. U.S.A.* 85, 6465–6467.
33. Singh, K. K. (2004) Mitochondrial dysfunction is a common phenotype in aging and cancer. *Ann. N.Y. Acad. Sci.* 1019, 260–264.
34. Wissing, S., Ludovico, P., Herker, E., Buttner, S., Engelhardt, S. M., Decker, T., Link, A., Proksch, A., Rodrigues, F., Corte-Real, M., Frohlich, K. U., Manns, J., Cande, C., Sigrist, S. J., Kroemer, G., and Madeo, F. (2004) An AIF orthologue regulates apoptosis in yeast. *J. Cell Biol.* 166, 969–974.
35. Schuller, H. J. (2003) Transcriptional control of nonfermentative metabolism in the yeast *Saccharomyces cerevisiae*. *Curr. Genet.* 43, 139–160.
36. Barros, M. H., Bandy, B., Tahara, E. B., and Kowaltowski, A. J. (2004) Higher respiratory activity decreases mitochondrial reactive oxygen release and increases life span in *Saccharomyces cerevisiae*. *J. Biol. Chem.* 279, 49883–49888.
37. Bandara, P. D., Flattery-O'Brien, J. A., Grant, C. M., and Dawes, I. W. (1998) Involvement of the *Saccharomyces cerevisiae* UTH1 gene in the oxidative-stress response. *Curr. Genet.* 34, 259–268.
38. Kissova, I., Deffieu, M., Manon, S., and Camougrand, N. (2004) Uth1p is involved in the autophagic degradation of mitochondria. *J. Biol. Chem.* 279, 39068–39074.
39. Camougrand, N., Grelaud-Coq, A., Marza, E., Priault, M., Bessoule, J. J., and Manon, S. (2003) The product of the UTH1 gene, required for Bax-induced cell death in yeast, is involved in the response to rapamycin. *Mol. Microbiol.* 47, 495–506.
40. Kim, H. Y., and Gladyshev, V. N. (2004) Methionine sulfoxide reduction in mammals: Characterization of methionine-R-sulfoxide reductases. *Mol. Biol. Cell* 15, 1055–1064.
41. Kim, H. Y., and Gladyshev, V. N. (2006) Alternative first exon splicing regulates subcellular distribution of methionine sulfoxide reductases. *BMC Mol. Biol.* 7, 11.